

BALMORE GROUP

Est. 1984

SCOTLAND



An industry leader in UAV Inspections, Repair and Specialist Cleaning of High-Value Assets



INSPECT

REPAIR

CLEAN

Balmore Group (Scotland) Ltd, C5 - Kelburn Business Park, Port Glasgow, PA14 6BL
Glasgow: 0141 944 6100 Edinburgh: 0131 314 2896 Email: info@balmore-ltd.co.uk

www.thebalmoregroup.co.uk



INSPECTION SERVICES

INSPECT – REPAIR – CLEAN

From Construction to Renewables, Utilities to Infrastructure - Whatever the Sector, Whatever the Challenge, our aim is to follow through with fast, informed, safe & cost-effective survey decisions & solutions.

Inspired by the latest state-of-the-art UAV / ROV technologies, our award-winning aerial and underwater capabilities provide invaluable access to remote, difficult to reach or confined spaces. Whether above or below the surface, the abilities of our Unmanned Aerial Vehicles & underwater Remote Operated Vehicles, allows us to work faster, higher and deeper, offering our clients the very best service to suit budgets & priorities.

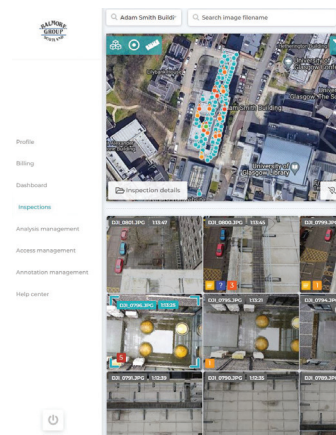
Industry leading drones combined with cutting-edge data management software can expose asset defects hidden from or undetectable by the human eye in incredible detail. With up-close visual and thermal data assessed in real time, issues can be recognised, analysed and remedied at the inspection stage ensuring the fastest possible fix with minimal disruption to performance.

For more complex issues requiring scaffolding, rope or powered access, data can be further utilised to achieve a focussed, customised and cost-effective solution, allowing you to make key decisions with confidence.

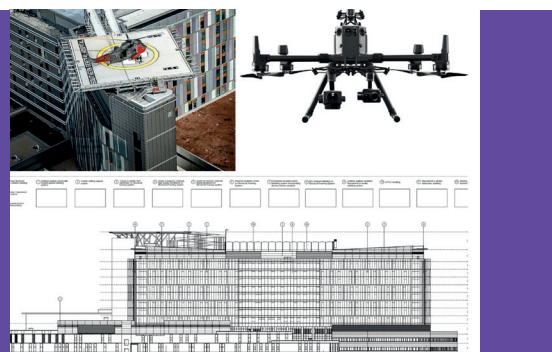
Using only fully certified, Operating Safety Case approved experts in environments where safety, efficiency and productivity are paramount, we never fail to rise, or dive, to the challenge.

Services:

- Infrastructure
- Confined Spaces
- Wind
- Oil & Gas
- Utilities
- Marine



CASE STUDY The Queen Elizabeth University Hospital - Roof, Glass & Cladding Survey for one of Europe's largest hospitals. Utilising the latest drone technology, we can now provide accurate fault locations with the laser range finder, as well as combined platform and payload direction data. With this information, the NHS can pin point essential repairs using our cloud based inspection software filtering by helipad, lightning protection, roof, elevation, zone, floor level, visual, thermal & fault type. Allowing essential maintenance budgets to be spent efficiently, identifying faults and there location before they become an issue, & offering the most cost effective access methods of repairing these faults.





SPECIALIST MAINTENANCE & REPAIRS

INSPECT – REPAIR - CLEAN

As one of the UK's leading industrial roofing, rope access & working-at-height specialists, we have been tried by unyielding environmental conditions, tested by evermore demanding locations and challenged by greater heights - our aim is to excel by continuing to raise the bar in quality, efficiency, expertise and safety.

Whether ongoing maintenance or repair - from construction to engineering, heritage to renewable – our cross-sector ability, enabled by our highly skilled teams & cutting edge equipment, allows us to tackle any job with precision & attention to detail.

With over 40 years' experience in specialist repairs, our teams work diligently and meticulously to ensure your assets remain weatherproof, leak proof and/or fire retardant, providing the most efficient, cost-effective solutions to ensure future maintenance costs are kept to a minimum.

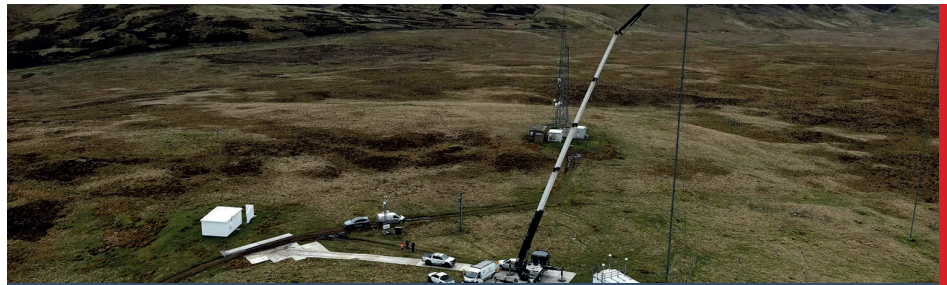
Services:

- Industrial & Traditional Roofing
- High Performance Flat Roofing & Cladding
- Industrial Rope Access Specialists
- Renewable Services
- Lightning Protection & Earthing
- Confined Space Services
- Lightning Protection Install & Testing
- Steeplejack Services
- Fall Protection Install & Testing
- Demolition Works
- Lead Work
- Historic Stonework
- Concrete Repairs



CASE STUDY Northern Goldsmiths Newcastle - Grade A listed building completed by Balmore Specialist Contracts Ltd. Scope of works included: Emergency Repairs; Steeplejack/Rope access works; Scaffold Erection; Rolex Picture Wrap Installation; Roofing/Lead Works; External Repairs to Stonework; Painting/Gold Leaf works; Lightning Protection; New Electrical Rolex Signage; Bird Protection & Stonework Cleaning - All to Listed Building Standard. The finished building is testament to quality, craftsmanship & good old fashioned hard work. Balmore is fully approved by the NFRC.





CLEANING SERVICES

INSPECT – REPAIR - **CLEAN**

Water saturation, surface damage, biohazards – a fast, professional and cost-effective response is vital.

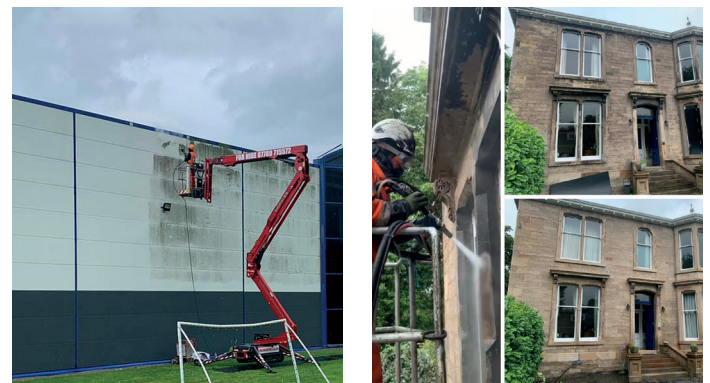
At Balmore Contracting, our specialist cleaning division works quickly and effectively, assessing your specific needs before despatching highly qualified technicians, equipped with the very latest tools and cutting edge treatments, to stop any threat to your property, premises or people in its tracks.

Fully accredited to work on both Grade A/Grade 1 listed buildings and on modern surfaces, our comprehensive range of state-of-the-art, specialist machinery includes the revolutionary DOFF steam-based and TORC vortex technologies. Low impact, high temperature treatments can be fine-tuned in situ, offering difficult access solutions sympathetic to the hardest or most fragile materials and making incredibly light work of biohazards, dirt, grime, paint or coatings.

As a Stonehealth Rosette Approved Contractor, our independent, industry recognised stamp of approval demonstrates that every project, large or small, is carried out safely, and to the very highest standard.

Services:

- Industrial
- Biohazard & Trauma (including Coronavirus)
- Renewables
- Conservation
- Site Clearance & Demolition
- Graffiti, Paint & Coatings
- Difficult Access
- Duct & Ventilation



CASE STUDY Fujifilm Grangemouth - Scope of works: Erection of fully encapsulated heated layer designed scaffold for winter working.

DOFF Clean: Brick pointing rake out and replaced with remmers high strength class M10 joint mortar. High performance Remmers hydrophobising impregnation cream sealer application.

Concrete repairs, Cladding repairs, Lightning protection, ICOPAL Roof Replacement

